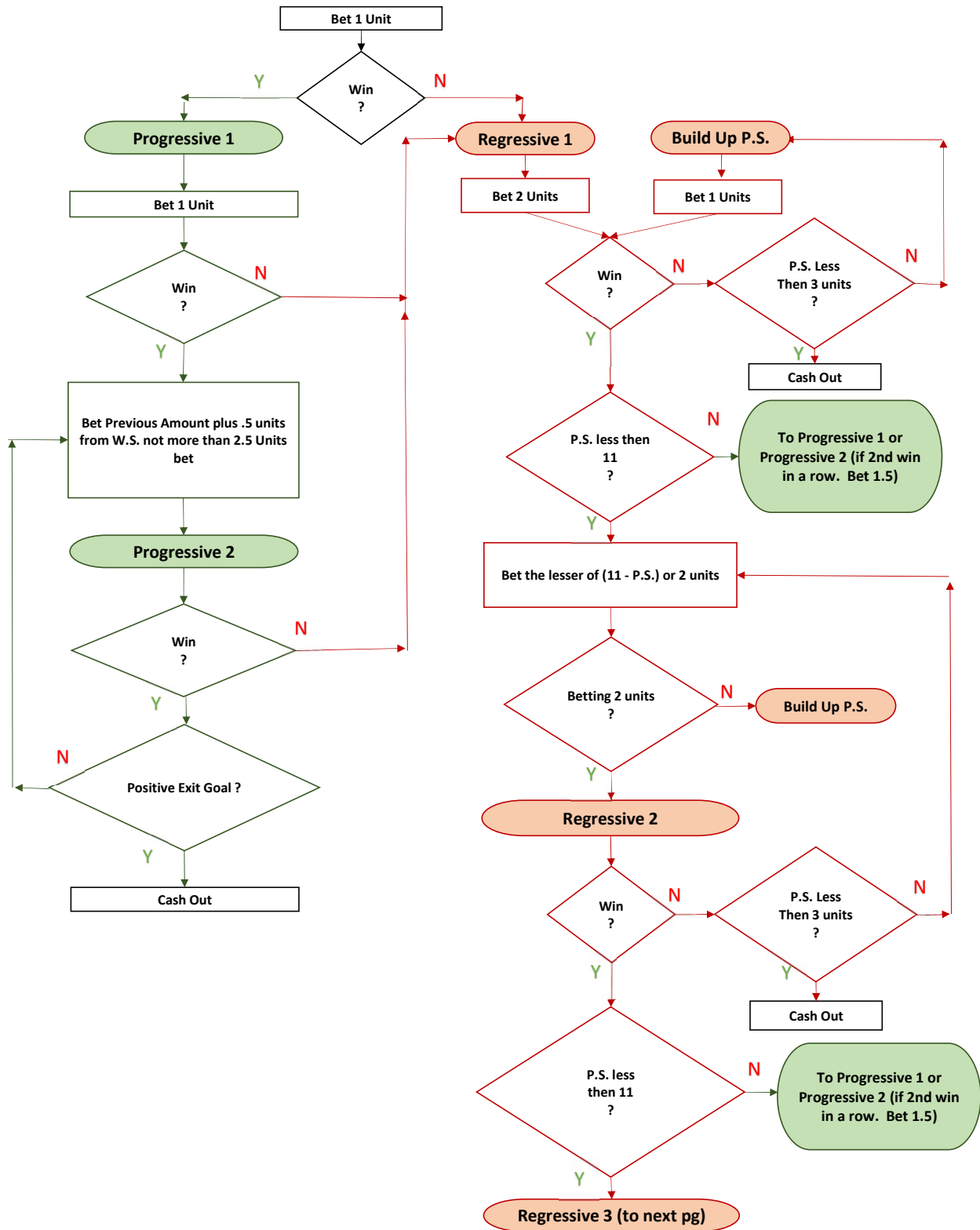
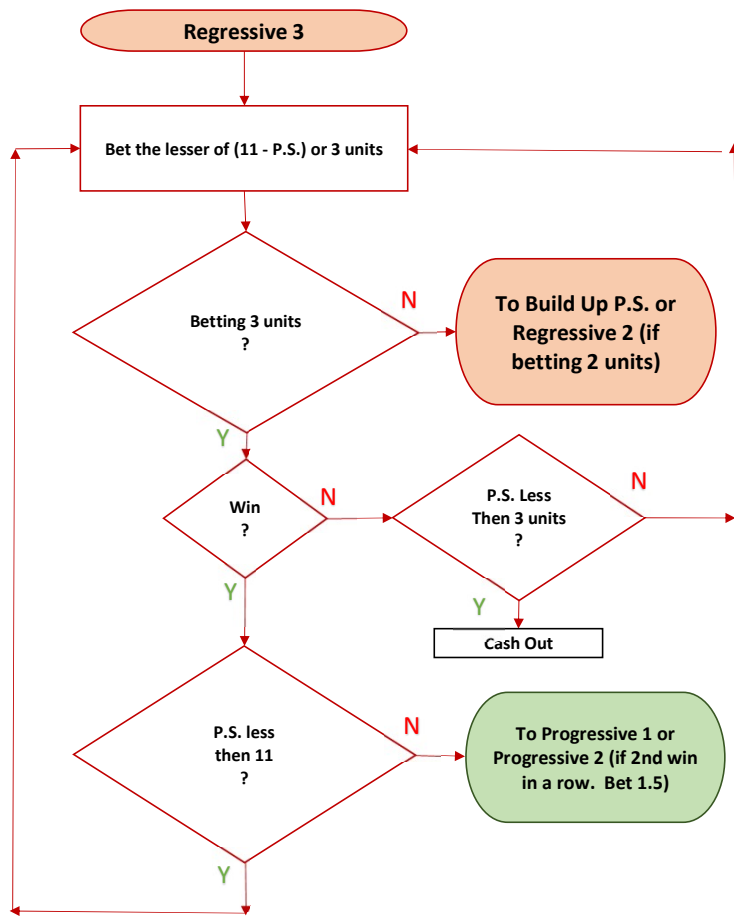


TRG Wagering System 4, "Win More Keep More"



TRG Wagering System 4, "Win More Keep More"



Wager Suggestion: (Play Stack + Win Stack)			
Progressive	Bet \$10	Bet \$25	Bet \$50
1	10	25	50
1.5	15	40	75
2	20	50	100
2.5	25	60	125

Play Stack Wager		
Bet \$10	Bet \$25	Bet \$50
10	25	50
10	25	50
10	25	50
10	25	50

Win Stack Wager**		
Bet \$10	Bet \$25	Bet \$50
0	0	0
5	15	25
10	25	50
15	35	75

** Win Stack Wagering begins after 2 wins in a row and an addition to the Win Stack.

Regressive	Bet \$10	Bet \$25	Bet \$50
1	10	25	50
2	20	50	100
3	30	75	150

* All Regressive wagers are made from Play Stack

\$\$\$\$ (WIN MORE KEEP MORE) \$\$\$\$	
Notes: Wagering System First Introduced in Episode 97	
1	P.S. = Play Stack (Starts with 10 Units)
2	W.S. = Win Stack (Starts with 0 units)
3	Re-bet all Surrenders & Ties
4	All wins get totaled in the P.S. to determine the next bet
5	All Chips in the P.S. greater than 10 are moved to the W.S.
6	Splits & doubles additional bets are taken from the P.S. and W.S. in the same proportion as the original bet.
7	If this system calls for a bet that takes the P.S. down below 3 units it is up to the player to determine whether to make the bet. Doubles and splits additional bets should be considered.